



2018

28-30 JUNE
VIENNA, AUSTRIA

SUPPORTIVE CARE
MAKES EXCELLENT
CANCER CARE POSSIBLE



MASCC/ISOO

ANNUAL MEETING ON SUPPORTIVE CARE IN CANCER



www.mascc.org/meeting



#MASCC18

The Association of Cancer-Related Fatigue with All-Cause Mortality of Colorectal and Endometrial Cancer Survivors: A Population-Based Study



2018
28-30 JUNE
VIENNA, AUSTRIA

SUPPORTIVE CARE
MAKES EXCELLENT
CANCER CARE POSSIBLE

Salome Adam



University of
Zurich^{UZH}

I have nothing to disclose



Background & Rationale

1. Cancer-related Fatigue (CRF) is a prevalent and distressing symptom
2. The etiology of CRF is equivocal
3. Research into the association between CRF and mortality is limited



2018

28-30 JUNE
VIENNA, AUSTRIA

SUPPORTIVE CARE
MAKES EXCELLENT
CANCER CARE POSSIBLE



Data



profiles



2018

28-30 JUNE
VIENNA, AUSTRIA

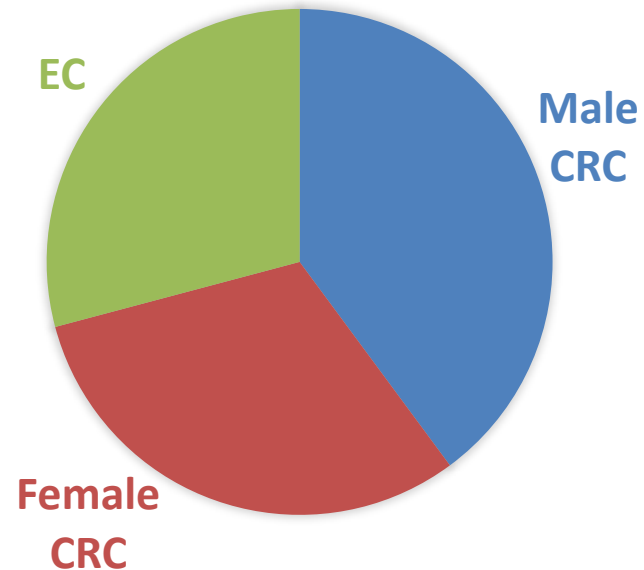
SUPPORTIVE CARE
MAKES EXCELLENT
CANCER CARE POSSIBLE

- **PROFILES - Patient Reported Outcomes Following Initial treatment and Long-term Evaluation of Survivorship**
- **IKNL – Netherlands Comprehensive Cancer Organisation**
- **FAS – Fatigue Assessment Scale (cut-off: 21)**



Participants & Methods

- Study cohort (n = 2059)
- Short-term, Stage I-III, (disease-free) survivors
- Median follow-up time: **9.0 years** (range 0.4 – 13.8 years)
- Censoring date: **1.02.2017**
- Mortality: **N = 408 (20%)**



2018

28-30 JUNE
VIENNA, AUSTRIA

SUPPORTIVE CARE
MAKES EXCELLENT
CANCER CARE POSSIBLE



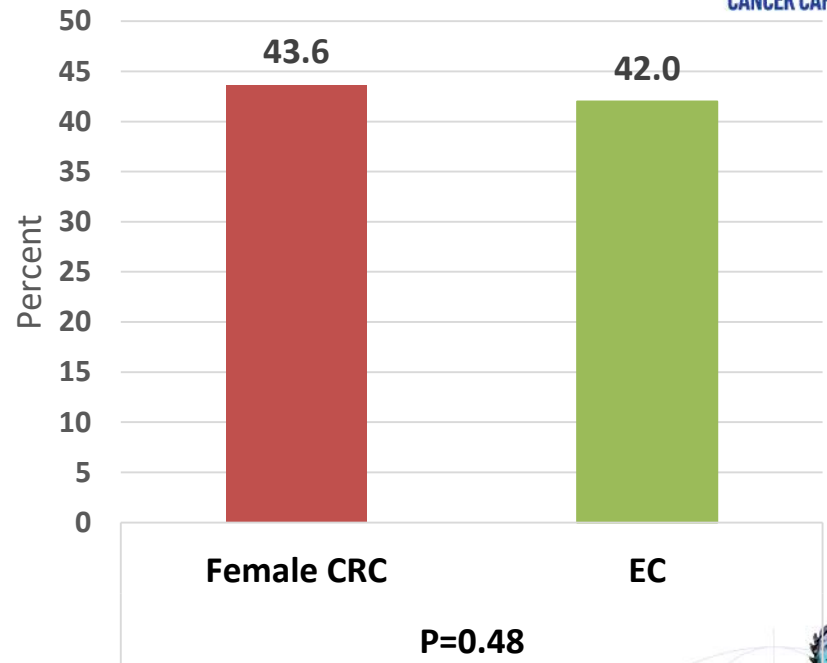
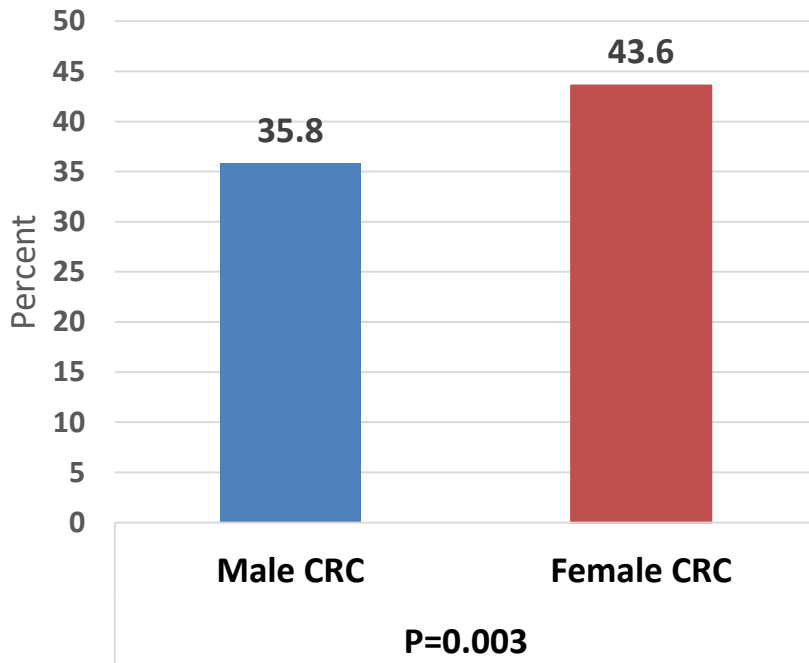
Results – Distribution of CRF



2018

28-30 JUNE
VIENNA, AUSTRIA

SUPPORTIVE CARE
MAKES EXCELLENT
CANCER CARE POSSIBLE



Results – Adjusted Risk Estimates, total population



2018

28-30 JUNE
VIENNA, AUSTRIA

SUPPORTIVE CARE
MAKES EXCELLENT
CANCER CARE POSSIBLE

	Total, N	Deaths, N	HR adj.	[95% CI]
Male Colorectal Cancer Survivors				
Not Fatigued	527	100	1.00	-
Fatigued	294	93	1.72	[1.29 – 2.31]
Female Colorectal Cancer Survivors				
Not Fatigued	360	51	1.00	-
Fatigued	278	55	1.23	[0.82 – 1.81]
Endometrial Cancer Survivors				
Not Fatigued	348	53	1.00	-
Fatigued	252	56	1.35	[0.90 – 2.02]

Cox regression models were adjusted for: age at invitation, cancer stage, primary treatment, years since diagnosis, education, number of comorbidities and smoking.



Summary

- 35.6 – 43.6% of our sample was fatigued
- CRF was more prevalent in EC and female CRC survivors compared to male CRC survivors
- CRF was significantly associated with all-cause mortality in male CRC survivors



2018

28-30 JUNE
VIENNA, AUSTRIA

SUPPORTIVE CARE
MAKES EXCELLENT
CANCER CARE POSSIBLE



Conclusion

- CRF has a different etiology in women, compared to men
- Further research:
Investigating causes of gender differences in the association of CRF with all-cause mortality



2018

28-30 JUNE
VIENNA, AUSTRIA

SUPPORTIVE CARE
MAKES EXCELLENT
CANCER CARE POSSIBLE





2018
28-30 JUNE
VIENNA, AUSTRIA

SUPPORTIVE CARE
MAKES EXCELLENT
CANCER CARE POSSIBLE

	Total, N	Deaths, N	HR adj.	[95% CI]
Male Colorectal Cancer Survivors				
Not Fatigued	438	78	1.00	-
Fatigued	165	52	1.76	[1.23 – 2.52]
Female Colorectal Cancer Survivors				
Not Fatigued	333	44	1.00	-
Fatigued	182	31	1.06	[0.65 – 1.75]
Endometrial Cancer Survivors				
Not Fatigued	216	34	1.00	-
Fatigued	119	26	1.34	[0.79 – 2.23]

